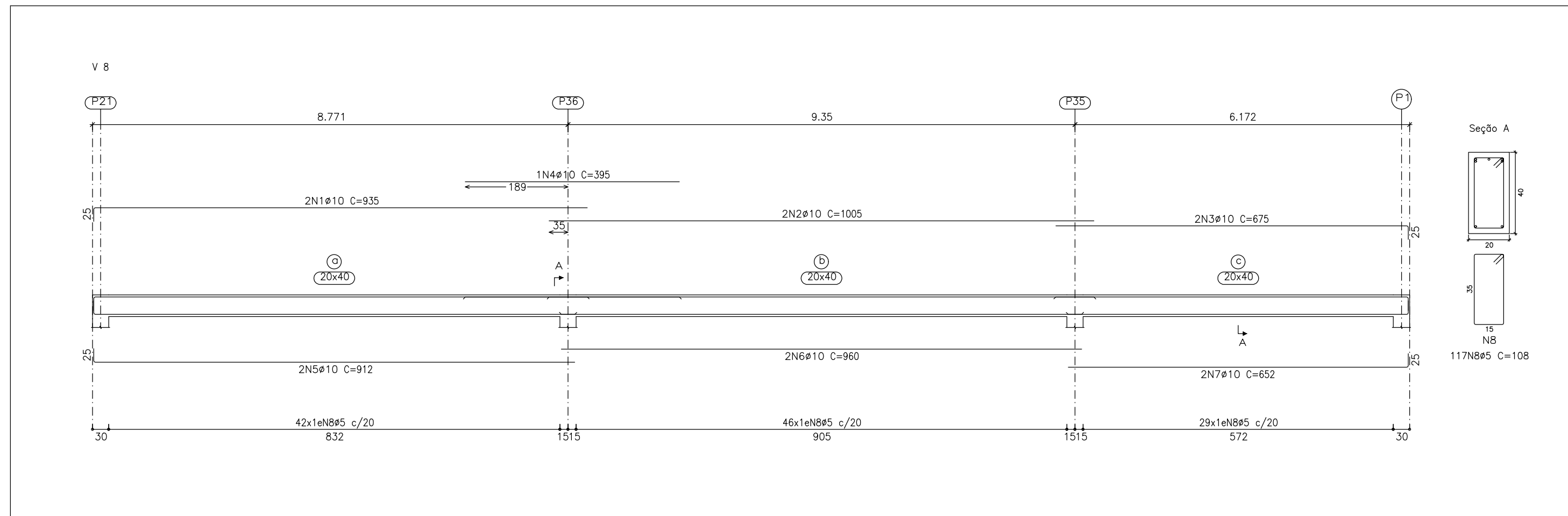
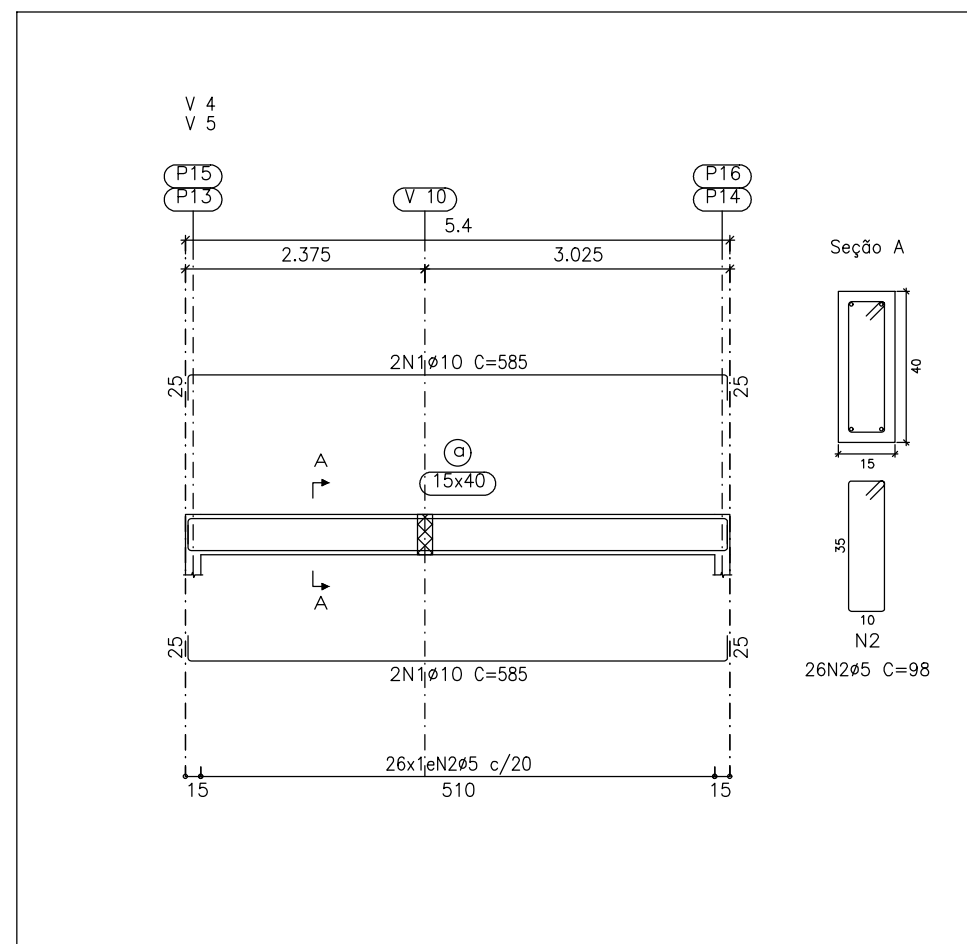
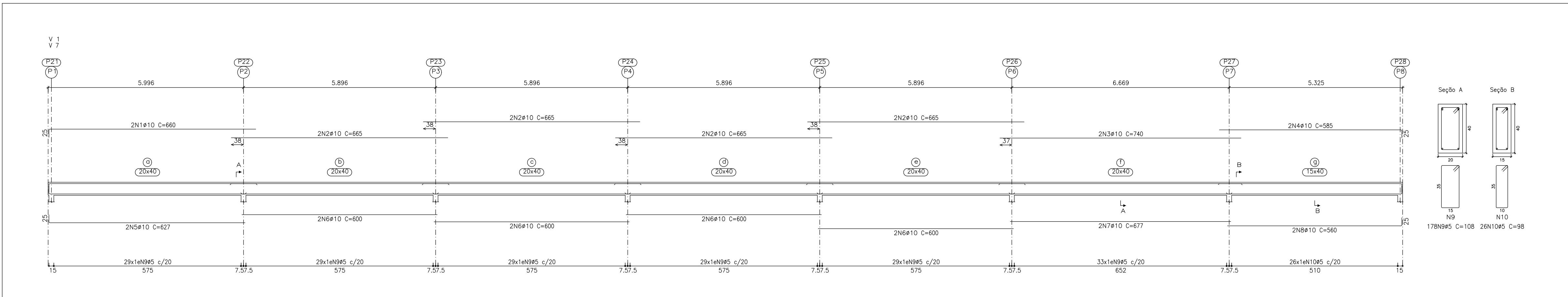
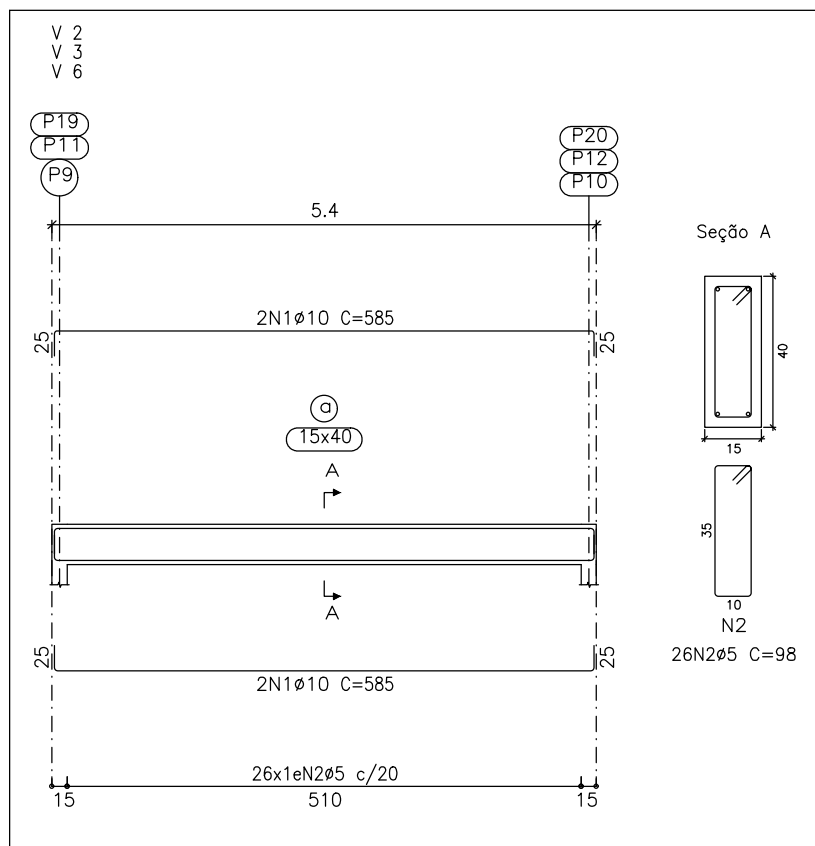
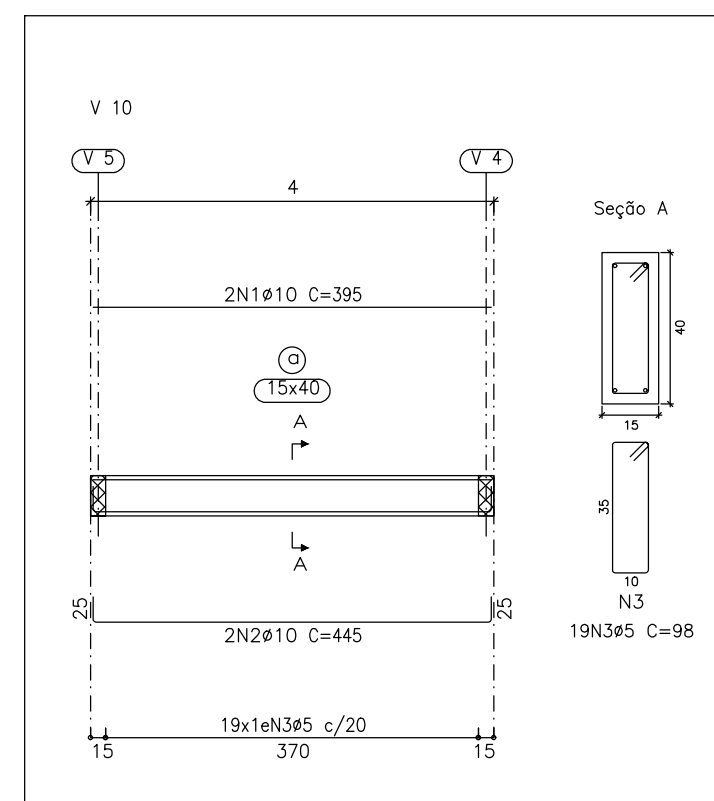
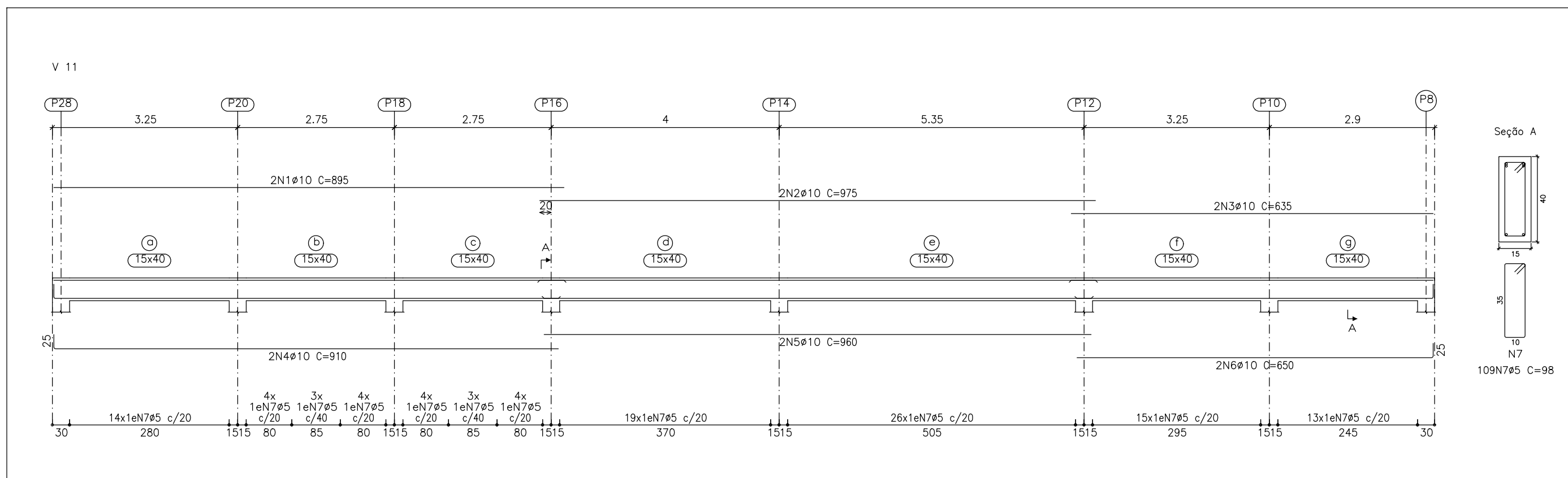
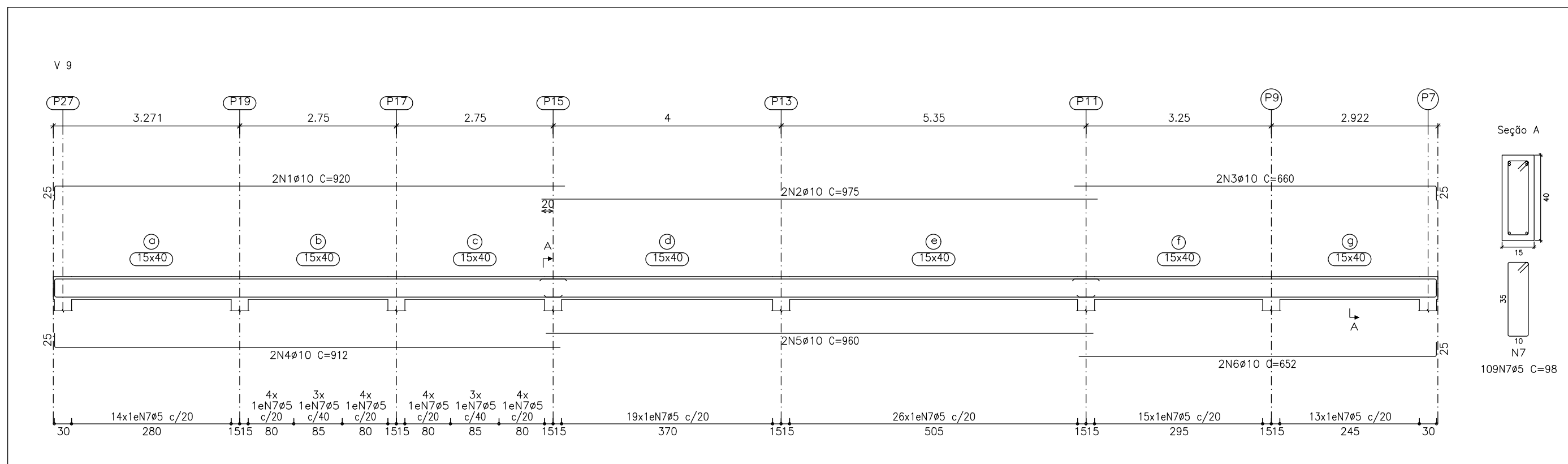


Resumo Aço	Comp. total	Peso+10%	Total
Desenho de vigas	(m)	(kg)	
CA-50 $\phi 10$	799.0	542	542
CA-60 $\phi 5$	921.5	159	159
Total			701



ARMAÇÃO DAS VIGAS DA FUNDAÇÃO
ESCALA 1:75
ESCALA DAS SEÇÕES
1:20



Elemento	Pos.	Diam.	Q.	Esquema (cm)	Comp. (cm)	Total (cm)	CA-50 (kg)	CA-60 (kg)
V 1=V 7	1	$\phi 10$	2		635	660	1320	8.1
	2	$\phi 10$	8		665	665	5320	32.8
	3	$\phi 10$	2		740	740	1480	9.1
	4	$\phi 10$	2		580	585	1170	7.2
	5	$\phi 10$	2		602	627	1254	7.7
	6	$\phi 10$	8		600	600	4800	29.6
	7	$\phi 10$	2		677	677	1354	8.3
	8	$\phi 10$	2		535	560	1120	6.9
	9	$\phi 5$	178		15	108	19224	30.2
	10	$\phi 5$	26		10	98	2548	4.0
Total+10% (x2)							120.7	37.6
V 2=V 3=V 6							241.4	75.2
1	$\phi 10$	4		535	585	2340	14.4	
	$\phi 5$	26		10	98	2548	4.0	
Total+10% (x3)							15.8	4.4
V 4=V 5							47.4	13.2
1	$\phi 10$	4		535	585	2340	14.4	
	$\phi 5$	26		10	98	2548	4.0	
Total+10% (x2)							15.8	4.4
V 8							31.6	8.8
1	$\phi 10$	2		910	935	1870	11.5	
	$\phi 10$	2		1005	1005	2010	12.4	
	$\phi 10$	2		650	675	1350	8.3	
	$\phi 10$	1		395	395	395	2.4	
	$\phi 10$	2		887	912	1824	11.2	
	$\phi 10$	2		960	960	1920	11.8	
	$\phi 10$	2		627	652	1304	8.0	
	$\phi 5$	117		15	108	12636	19.8	
Total+10%							72.2	21.8
V 9	1	$\phi 10$	2		895	920	1840	11.3
	2	$\phi 10$	2		975	975	1950	12.0
	3	$\phi 10$	2		635	660	1320	8.1
	4	$\phi 10$	2		887	912	1824	11.2
	5	$\phi 10$	2		960	960	1920	11.8
6	$\phi 10$	2		627	652	1304	8.0	
	$\phi 5$	109		10	98	10682	16.8	
Total+10%							68.6	18.5
V 10	1	$\phi 10$	2		395	395	790	4.9
	2	$\phi 10$	2		395	445	890	5.5
	3	$\phi 5$	19		10	98	1862	2.9
Total+10%							11.4	3.2
V 11	1	$\phi 10$	2		895	895	1790	11.0
	2	$\phi 10$	2		975	975	1950	12.0
	3	$\phi 10$	2		635	635	1270	7.8
	4	$\phi 10$	2		885	910	1820	11.2
	5	$\phi 10$	2		960	960	1920	11.8
	6	$\phi 10$	2		625	650	1300	8.0
	7	$\phi 5$	109		10	98	10682	16.8
Total+10%							68.0	18.5
$\phi 5$:							0.0	159.2
$\phi 10$:							540.6	0.0
Total:							540.6	159.2